

C2PA Investigations

Tim Bray

tbray@textuality.com · tbray.org · @timbray@cosocial.ca



Tim Bray

@timbray



How about camera companies install a signed cert on each device, and the device signs each photo/video-clip before saving? [#TruthTech](#)

3:37 PM · Dec 16, 2017

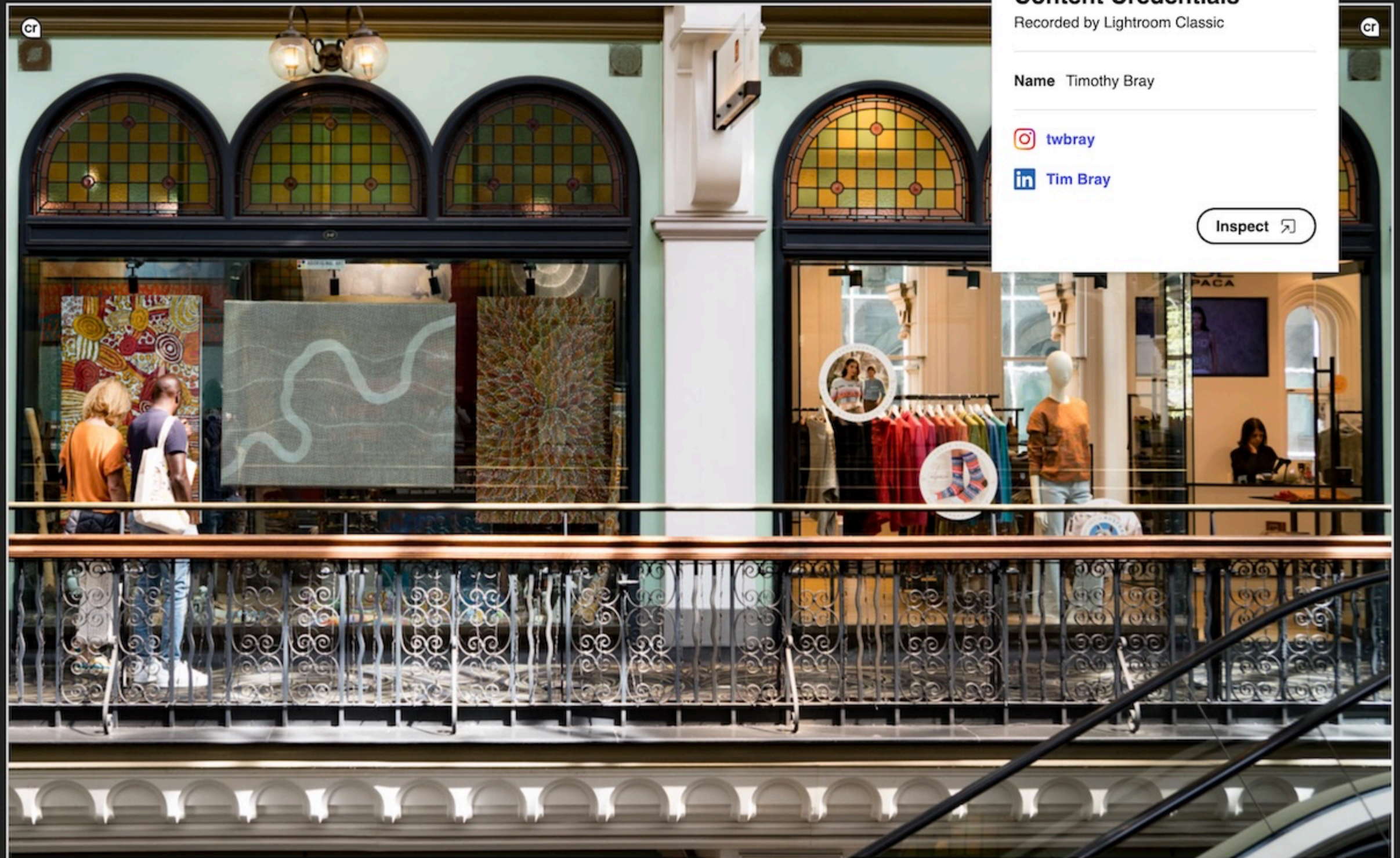
View post engagements



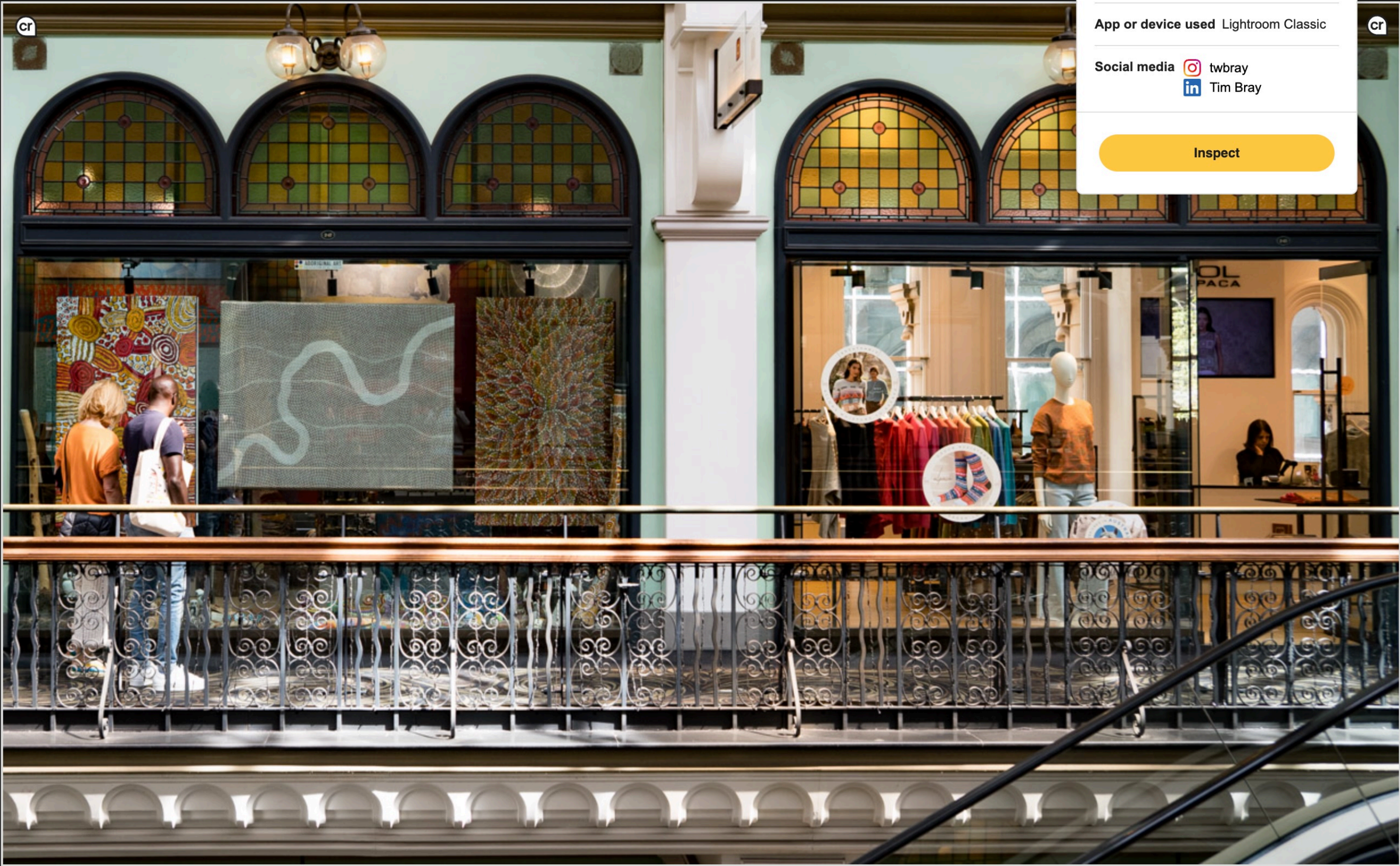
December 2017



Investigations Into C2PA (photo)



Investigations Into C2PA (photo)



Content Credentials

Issued by Adobe Inc. on Sep 9, 2025

Produced by Timothy Bray

App or device used Lightroom Classic

Social media  twbray
 Tim Bray

Inspect

Inspect content to dig deeper

Drag content into Verify to inspect its Content Credentials in detail and see how it has changed over time.

Content Credentials are still rolling out, so the content you choose to inspect may not have information to view.



[Select a file from your device](#)
or drag and drop anywhere

Supported formats: AVI, AVIF, DNG, HEIC, HEIF, JPEG, M4A, MOV, MP3, MP4, PDF, PNG, SVG, TIFF, WAV, WebP

 Something went wrong | 

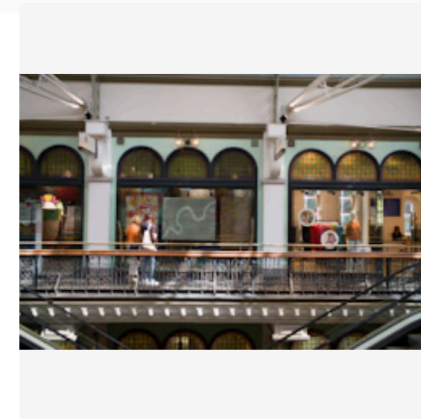


+ Fit -

Compare

L1000004.DNG

Recorded by Leica Camera AG



Content details

Information about this content and how it was made.

App or device used

M11-P 2.2.2

Recorded by

Leica Camera AG

Camera capture details

Additional data sourced from the camera used to take an image or video. EXIF data can be edited by the content producer.

Capture date

Feb 28, 2021 at 12:28 PM PST

LEICA M11-P
R-Adapter M
7424 x 4936

ISO 640 0mm 1/250 s

Content details



Information about this content and how it was made.

App or device used



M11-P 2.2.2

Recorded by



Leica Camera AG



Camera capture details



Additional data sourced from the camera used to take an image or video. EXIF data can be edited by the content producer.

Capture date

Feb 28, 2021 at 12:28 PM PST

LEICA M11-P

R-Adapter M

7424 x 4936

ISO 640

0mm

1/250 s

Contributor details



Information shared by people involved in making this content.

Produced by

Timothy Bray



 Instagram [twbray](#)

 LinkedIn [Tim Bray](#)

Content details



Information about this content and how it was made.

App or device used

 Lightroom Classic 14.5.1

Recorded by

 Adobe Inc. on Sep 9, 2025



Actions

Color or exposure edits

Adjusted properties like tone, saturation, curves, shadows, or highlights

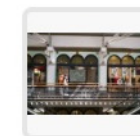
Cropping edits

Used cropping tools, reducing or expanding visible content area

Opened

Opened a pre-existing file

Ingredients



L1000004.DNG

Recorded by Leica Camera AG

What I did

1. Cropped the picture down.
2. Used Lightroom's "Dehaze" tool because it looked a little cloudy.
3. Adjusted the exposure and contrast, and boosted the blacks a bit.
4. Sharpened it up.

Contributor details



Information shared by people involved in making this content.

Produced by

Timothy Bray



 Instagram [twbray](#)

 LinkedIn [Tim Bray](#)

Content details




Information about this content and how it was made.

App or device used

 Lightroom Classic 14.5.1

Recorded by

 Adobe Inc. on Sep 9, 2025



Actions

Color or exposure edits

Adjusted properties like tone, saturation, curves, shadows, or highlights

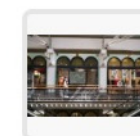
Cropping edits

Used cropping tools, reducing or expanding visible content area

Opened

Opened a pre-existing file

Ingredients



L1000004.DNG

Recorded by Leica Camera AG

Actual C2PA Data (small samples)

Leica EXIF Fields

```
"exif:ApertureValue": "2.79917",  
"exif:BitsPerSample": "16",  
"exif:BodySerialNumber": "6006238",
```

Lightroom Classic Adjustments:

```
{  
  "action": "c2pa.color_adjustments",  
  "parameters": {  
    "action": "c2pa.color_adjustments",  
    "parameters": {  
      "com.adobe.acr.value": "60",  
      "com.adobe.acr": "Exposure2012"  
    }  
  }  
},  
{  
  "action": "c2pa.color_adjustments",  
  "parameters": {  
    "com.adobe.acr": "Sharpness",  
    "com.adobe.acr.value": "52"  
  }  
},  
{  
  "action": "c2pa.cropped",  
  "parameters": {  
    "com.adobe.acr.value": "Rotated Crop",  
    "com.adobe.acr": "Crop"  
  }  
},  
}
```


Actual C2PA Data (small samples)

Leica EXIF Fields

```
"exif:ApertureValue": "2.79917",  
"exif:BitsPerSample": "16",  
"exif:BodySerialNumber": "6006238",
```

Lightroom Classic Adjustments:

```
{  
  "action": "c2pa.color_adjustments",  
  "parameters": {  
    "action": "c2pa.color_adjustments",  
    "parameters": {  
      "com.adobe.acr.value": "60",  
      "com.adobe.acr": "Exposure2012"  
    }  
  }  
},  
{  
  "action": "c2pa.color_adjustments",  
  "parameters": {  
    "com.adobe.acr": "Sharpness",  
    "com.adobe.acr.value": "52"  
  }  
},  
{  
  "action": "c2pa.cropped",  
  "parameters": {  
    "com.adobe.acr.value": "Rotated Crop",  
    "com.adobe.acr": "Crop"  
  }  
},  
},
```








AI or
no AI?



AI or no AI?



Actions

-  **Color or exposure edits**
Adjusted properties like tone, saturation, curves, shadows, or highlights
-  **Cropping edits**
Used cropping tools, reducing or expanding visible content area
-  **Drawing edits**
Used tools like pencils, brushes, erasers, or shape, path, or pen tools
-  **Opened**
Opened a pre-existing file



ChatGPT

c2patool: ✖

digitalSourceType:

trainedAlgorithmicMedia



Pixel 10 with Magic Eraser

digitalSourceType:

compositeWithTrainedAlgorithmicMedia

Pixel 10



How this was made

Content Credentials



Media captured with a camera

Info by Google LLC



Edited with AI tools

Info by Google LLC



Edited with non-AI tools

Info by Google LLC

Content Credentials maintains the history of AI and non-AI edits.
[Learn more](#) about how Google displays media history and provides transparency about AI.

Pixel 10



How this was made Content Credentials



Media captured with a camera
Info by Google LLC



Edited with AI tools
Info by Google LLC



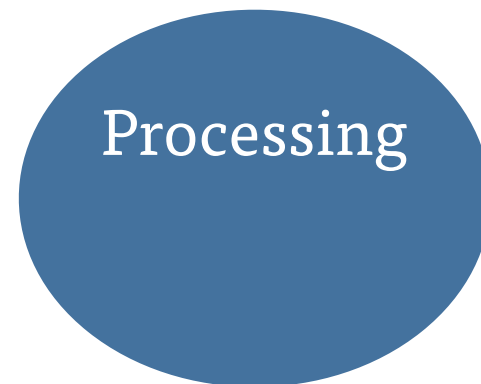
Edited with non-AI tools
Info by Google LLC

Content Credentials maintains the history of AI and non-AI edits.
[Learn more](#) about how Google displays media history and provides transparency about AI.

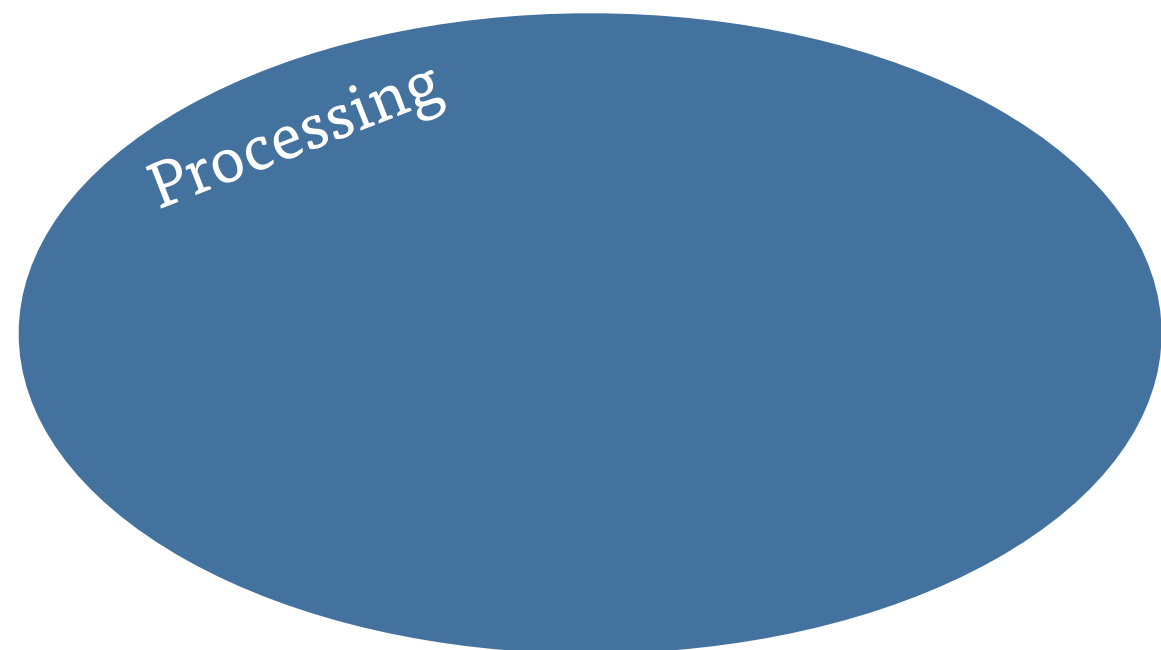
- Device is just “Pixel camera”
- Not optional!
- DigitalSourceType: computationalCapture (if no genAI)
- Timestamp is “untrusted”

C2PA Taxonomy

C2PA Taxonomy



C2PA Taxonomy



Processing

Thanks!

Tim Bray

tbray@textuality.com · tbray.org · @timbray@cosocial.ca